



ONWARD

PERSONALIZED RARE DISEASE SUPPORT DESIGNED FOR CAREGIVERS AND PATIENTS



TURN POTENTIAL INTO PROGRESS

Ready to get started?

1-844-ONWARD-1

(1-844-669-2731)

ONWARD® is provided as a service of UCB and is intended to support the appropriate use of UCB medicines.
ONWARD may be amended or canceled at any time without notice. Some program and eligibility restrictions may apply.

KYGEVVI™ (doxecitine and doxribtimine) Powder for Oral Solution 2 g/2 g is a prescription medicine used for the treatment of thymidine kinase 2 deficiency (TK2d) in adults and children with a symptom onset on or before 12 years of age.

Please see inside back cover for **KYGEVVI IMPORTANT SAFETY INFORMATION.**



SUPPORT FOR YOU AND YOUR LOVED ONE

Diagnosing any disease can be challenging, and finding the correct diagnosis for a rare disease like thymidine kinase 2 deficiency (TK2d) is often even harder. Take a moment to recognize everything you've accomplished so far. There's more to be done, but you don't have to do it alone.

ONWARD® is designed to deliver personalized support for caregivers and patients throughout their treatment journey with KYGEVVI (doxecitine and doxribtamine).



LET'S TALK ONWARD

ONWARD is a service that helps you know what to expect with KYGEVVI treatment.

ONE-ON-ONE AND ONLINE

- A dedicated ONWARD Care Coordinator* will be personally assigned to support you
- Get important information 24/7 through our website

*ONWARD Care Coordinators do not provide medical advice and will refer patients to their healthcare professional for any questions related to their treatment plan.



IT'S ABOUT THE HUMAN TOUCH

Your ONWARD Care Coordinator is here to help support you throughout treatment with KYGEVVI.

After you join ONWARD, your Care Coordinator will reach out to you. This is more than a phone call. It's the beginning of a relationship designed to support you throughout the prescribed KYGEVVI treatment.

WITH YOU ALL THE WAY

Your Care Coordinator will:

- Help you know what to expect from KYGEVVI throughout your treatment experience
- Provide TK2d information and education
- Support you in working with our specialty pharmacy PANTHERx Rare
- Stay in contact to provide resources and support throughout the length of treatment
- Deliver personalized support tailored to your specific needs and circumstances



LET'S TALK COST

Access and affordability are especially important when talking about rare disease treatment. Your Care Coordinator can help empower you to make informed decisions moving forward.

HERE TO HELP

Your ONWARD Care Coordinator will:

- Review your insurance coverage with you
- Keep you informed on updates from specialty pharmacy PANTHERx Rare
- Explain financial assistance options (for eligible patients), even if you're uninsured



LET'S TALK REAL WORLD

Seeing your doctor is the first step in a new treatment. Your ONWARD Care Coordinator will help you with what to expect next. It's about your day-to-day experience.

HERE WITH YOU IN THE BEGINNING AND BEYOND

Your ONWARD Care Coordinator will:

- Offer guidance to help start and stay on your prescribed treatment, as appropriate
- Provide tools that may help keep you on your prescribed treatment schedule
- Assist you along your treatment journey



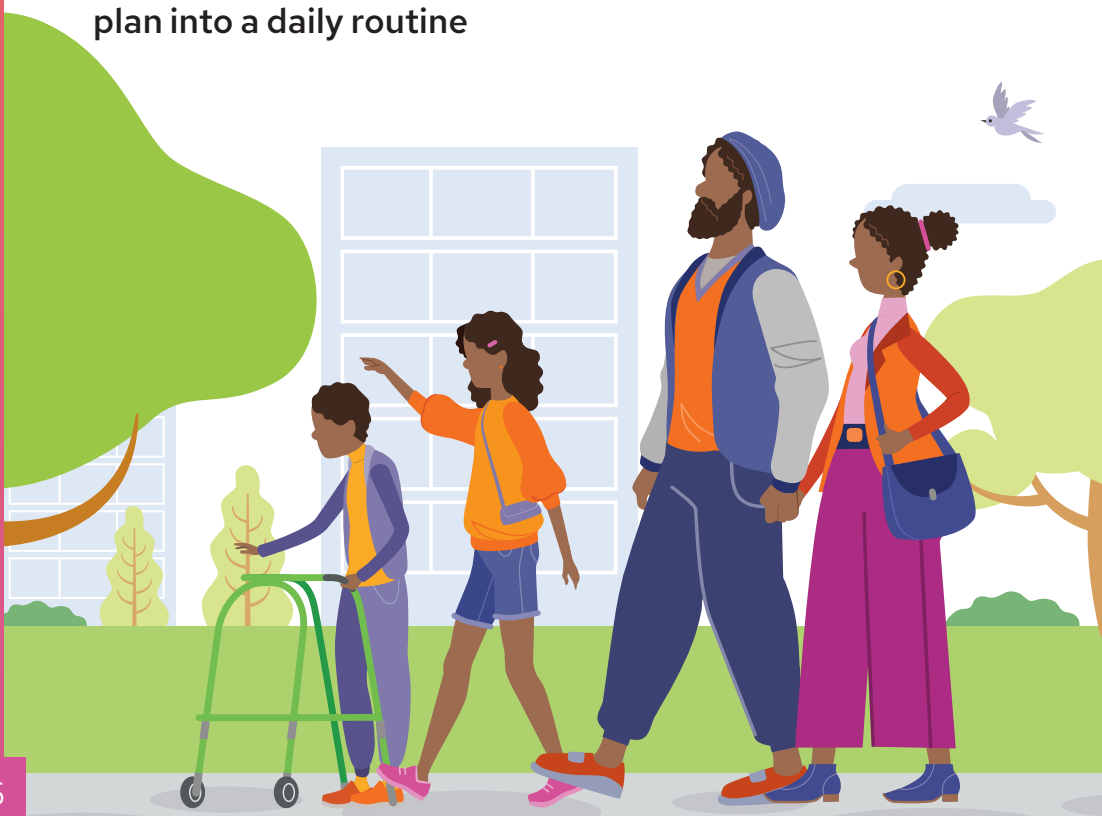


LET'S TALK ABOUT TREATMENT SUPPORT

It's only natural to have questions about what to expect when you start a new treatment. Your ONWARD Care Coordinator is here to support you during your treatment with UCB rare disease medicines.

Your ONWARD Care Coordinator will:

- Offer tips for patient and caregiver advocacy, to help you share treatment updates with your doctor
- Provide tools and resources to help you get started
- Help you understand what to expect from treatment with KYGEVVI (doxecitine and doxribtimine)
- Offer suggestions on incorporating this new treatment plan into a daily routine



LET'S TALK CONCERNS

It's OK. Everyone has worries and fears. Your ONWARD Care Coordinator is here to answer your questions and offer support as you navigate treatment with KYGEVVI.

EMPOWER YOURSELF

Your Care Coordinator will:

- Give you tools to talk with others about TK2d and your or your loved one's new treatment
- Suggest ways to ask for help and share with others
- Provide information about TK2d advocacy groups

KYGEVVI may cause serious side effects including elevated liver enzyme levels. Increased liver enzyme levels in your blood are common with KYGEVVI. Your healthcare provider will do blood tests to check your liver enzyme levels before starting treatment and during treatment with KYGEVVI. Tell your healthcare provider right away if you develop any signs or symptoms of liver problems, including loss of appetite, pain on the right side of your stomach area, dark or amber-colored urine, yellowing of your skin or the white part of your eyes, nausea and vomiting, or itching.



Open here for full Important Safety Information on KYGEVVI.

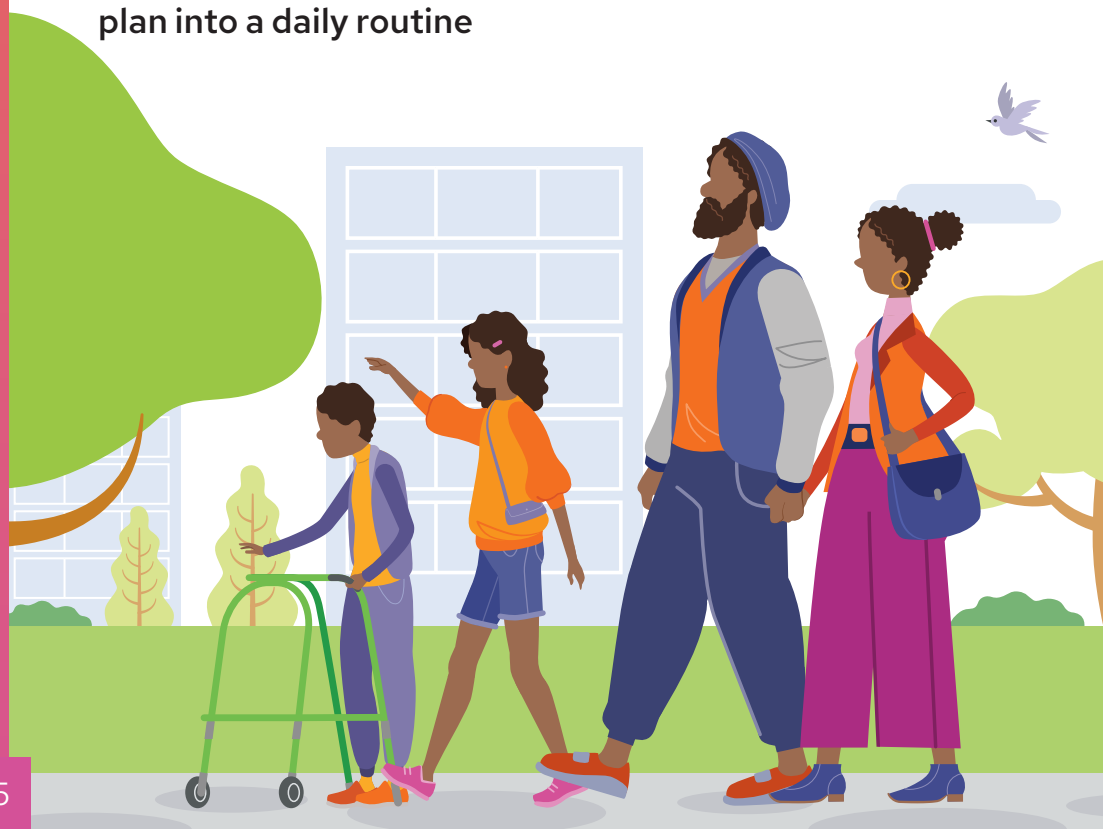


LET'S TALK ABOUT TREATMENT SUPPORT

It's only natural to have questions about what to expect when you start a new treatment. Your ONWARD Care Coordinator is here to support you during your treatment with UCB rare disease medicines.

Your ONWARD Care Coordinator will:

- Offer tips for patient and caregiver advocacy, to help you share treatment updates with your doctor
- Provide tools and resources to help you get started
- Help you understand what to expect from treatment with KYGEVVI (doxecitine and doxribtimine)
- Offer suggestions on incorporating this new treatment plan into a daily routine



IMPORTANT SAFETY INFORMATION

What is KYGEVVI?

KYGEVVI is a prescription medicine used for the treatment of thymidine kinase 2 deficiency (TK2d) in adults and children with a symptom onset on or before 12 years of age.

Before taking KYGEVVI, tell your healthcare provider about all of your medical conditions, including if you:

- have or have had liver problems.
- are pregnant or plan to become pregnant. It is not known if KYGEVVI will harm your unborn baby.
- are breastfeeding or plan to breastfeed. It is not known if KYGEVVI passes into your breast milk. Talk to your healthcare provider about the best way to feed your baby if you take KYGEVVI.

Tell your healthcare provider about all the medicines you take, including prescription and over-the-counter medicines, vitamins, and herbal supplements.

What are the possible side effects of KYGEVVI?

KYGEVVI may cause serious side effects, including:

- **Increased liver enzyme levels.** Increased liver enzyme levels in your blood are common with KYGEVVI. Your healthcare provider will do blood tests to check your liver enzyme levels before starting treatment and during treatment with KYGEVVI. Tell your healthcare provider right away if you develop any signs or symptoms of liver problems, including:
 - o loss of appetite
 - o pain on the right side of your stomach area
 - o dark or amber-colored urine
 - o yellowing of your skin or the white part of your eyes

- o nausea and vomiting
- o itching

- **Stomach and intestinal (gastrointestinal) problems.** Diarrhea and vomiting are common with KYGEVVI, but may also be severe and lead to hospitalization. Tell your healthcare provider right away if you have diarrhea or vomiting during treatment with KYGEVVI that lasts longer than a few days.

The most common side effects of KYGEVVI include:

- diarrhea
- stomach area (abdominal) pain including pain in the upper stomach area
- vomiting
- increased liver enzyme levels in your blood

Your healthcare provider may change your dose, temporarily stop, or permanently stop treatment with KYGEVVI if you develop certain side effects.

These are not all of the possible side effects of KYGEVVI. Call your doctor for medical advice about side effects. You are encouraged to report side effects of prescription drugs to the FDA. Visit www.fda.gov/medwatch or call 1-800-FDA-1088. You may also report side effects to UCB, Inc. at UCBCares® (1-844-599-CARE [2273]).

Please see additional information in the Patient Information Leaflet.



ONWARD



JOIN ONWARD®

There are three ways to get started:



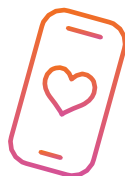
ASK your doctor to sign you up.

or



VISIT ucbONWARD.com/KYGEVVI to download an ONWARD Start Form and take it to your doctor.

or



CALL 1-844-ONWARD-1 (1-844-669-2731)
Monday through Friday, 8 AM – 8 PM ET.



KYGEVVI™ and ONWARD® are (registered) trademarks of the UCB Group of Companies.
©2025 UCB, Inc., Smyrna, GA 30080. All rights reserved.
US-MT-2400051